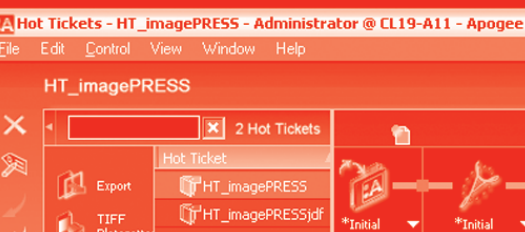


:APOGEE PREPRESS

:Apogee DigitalPrint Link

Digital press integration through CIP4 Digital Print ICS compliant JDF



:Apogee DigitalPrint Link enables printers to integrate their digital presses with :Apogee Prepress using industry standard CIP4 Digital Print ICS compliant JDF/JMF.

:Apogee Prepress' traditional tasks of page- and imposition proofing and plate-making are extended when integrating with a digital press. Prepress operators will be able to manage the creation of proofs, plates and the digital prints from within a single graphical user interface. In addition to typical digital print jobs, the digital press can also be used for commercial print job pre-runs/pre-series, job re-runs and to create validation proofs, such as completely "finished" dummies or mock-ups. This is done in generally less time than with traditional proofing methods and with the added bonus that the end result can be finished into a folded and stapled booklet.

Since the same :Apogee Prepress renderer is used for all traditional prepress and new digital tasks, customers will enjoy the highest level of print integrity.

KEY BENEFITS:

Drive proofers, CtP and digital presses from a single prepress workflow

- Only requires one easy to use graphical user interface
 - Prepress department prepares and controls
 - Press operators print and monitor output quality
 - Easy job setup: Imposition control
- Single point of workflow control

Efficient and streamlined production

- Time and cost savings by choosing output device inhouse
- Repurposing of the same resources and pages
- Manage and track jobs from a single UI

Ease of use

- Automated production and imposition control
- Combine traditional and digital print workflows within a single production plan

Re-use training and software/hardware investments

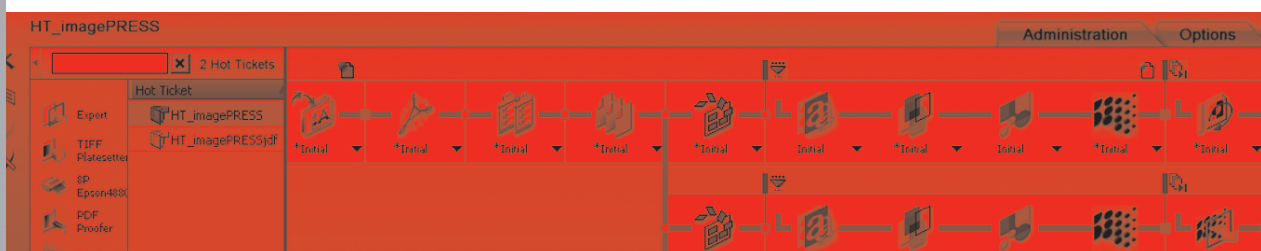
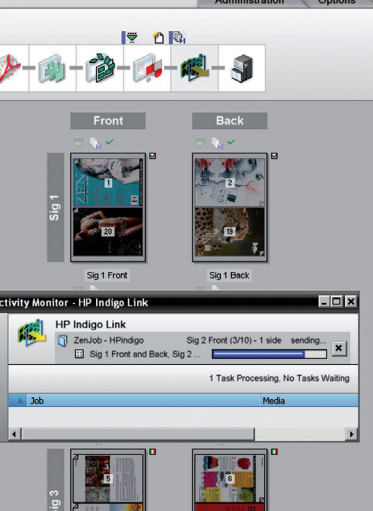
Production advantages & control

- All jobs submitted from :Apogee Prepress
- Better control over Creep, Bleed Crop, Trim and Page Boxes
- Higher throughput due to scaled/load-balanced architecture
- Spot colour processing
- Combine and process multi-page documents

Use of the same resources and proven processing components provides the highest print integrity and consistency

- ICC-profiles, fonts, ...
- :Apogee Preflight, Adobe Normalizer and Adobe PDF Print Engine rendering technology

:Apogee DigitalPrint Link



FEATURES:

Unified hybrid prepress workflow solution

- Manage prepress workflows for offset litho print production and automate on-demand print jobs on digital presses using one prepress workflow
- Content and colour quality defined and controlled by prepress workflow
- Common use of processing components and resources
 - Normalizer, Renderer, ICC-profiles, fonts, ...
- Identical workflow
 - Common processing adds consistency and provides print integrity

Integration of the digital press is based on CIP4's Digital Print ICS (Job Definition Format/Job Messaging Format)

- JDF is used to submit jobs from :Apogee Prepress including digital press specific parameters, such as paper type and size, screening and finishing
- JMF is used to
 - receive information about the digital press capabilities, which will show up as selectable features/parameters in :Apogee Prepress
 - to receive information about the configured media
 - receive information on print production status and various digital press related notifications s.a. door open, out of media, cancelled and deleted jobs
 - receive notifications on job progress for accounting & cost calculation purposes

PROVIDES:

- Automation of prepress tasks and output
- Job tracking and updating
- Production follow-up
- Files sent to the digital press are rendered by prepress and ready for digital output

Supporting a range of digital presses

- Canon imagePRESS C7000VP/C6000VP/C6000/C1/C1+ digital color presses
- Integration with EFI Fiery F JDF towards Xerox, Ricoh and Konica Minolta
- Integration with CreoPODS Creo Color Server is in preparation
- Other digital presses

SPECIFICATIONS:

- :Apogee DigitalPrint Link is standard functionality of the following :Apogee Prepress 8 products:
 - :Apogee Manage
 - :Apogee Integrate

Customers should consult with their local digital press sales and/or service representatives for the latest hardware and/or software requirements.

© Copyright 2012 by Agfa Graphics N.V. all rights reserved.

AGFA and the Agfa rhombus are trademarks of Agfa-Gevaert NV & Co KG.

:Apogee is a trademark of Agfa Graphics N.V.. Adobe is trademark of Adobe Systems Inc.. All other brand and product names may be service marks, trademarks, or registered trademarks of their own respective owners. All product specifications are subject to change without notice. GB 201204